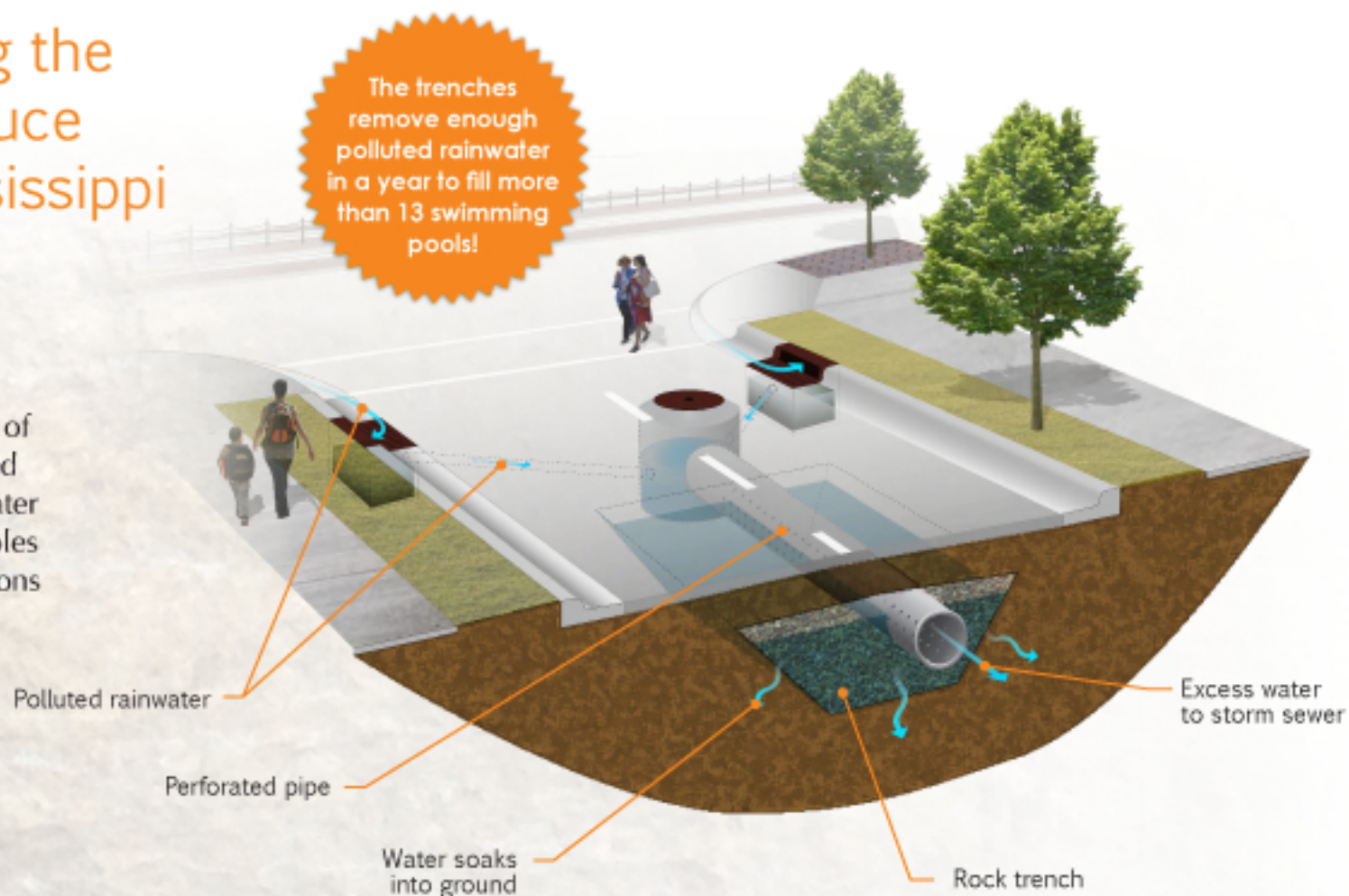


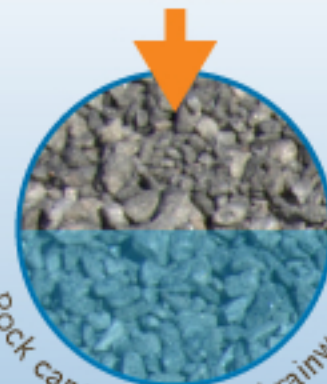
WHAT'S BENEATH THE STREET?

Rock trenches along the Green Line help reduce pollution in the Mississippi River. Here's how—

Polluted rainwater flows through storm drains into large pipes under the street. These pipes—punched with thousands of holes—are buried in long trenches filled with rocks the size of golf balls. The water fills the pipes and seeps through the holes into the rocks and soil. This filters millions of gallons of polluted water every year.



Polluted rainwater enters the trench



Rock captures polluted rainwater



Cleaner water in the Mississippi

Why?

Polluted rainwater carries dirt, oil and trash to the Mississippi River when it flows from streets into storm drains. Rain gardens, stormwater planters and rock trenches on side streets were built along the Green Line to clean polluted rainwater before it reaches the river. The Green Line on University Avenue also has the longest stretch of tree trench in Minnesota — five miles!



More information and multilingual signs at capitolregionwd.org.

