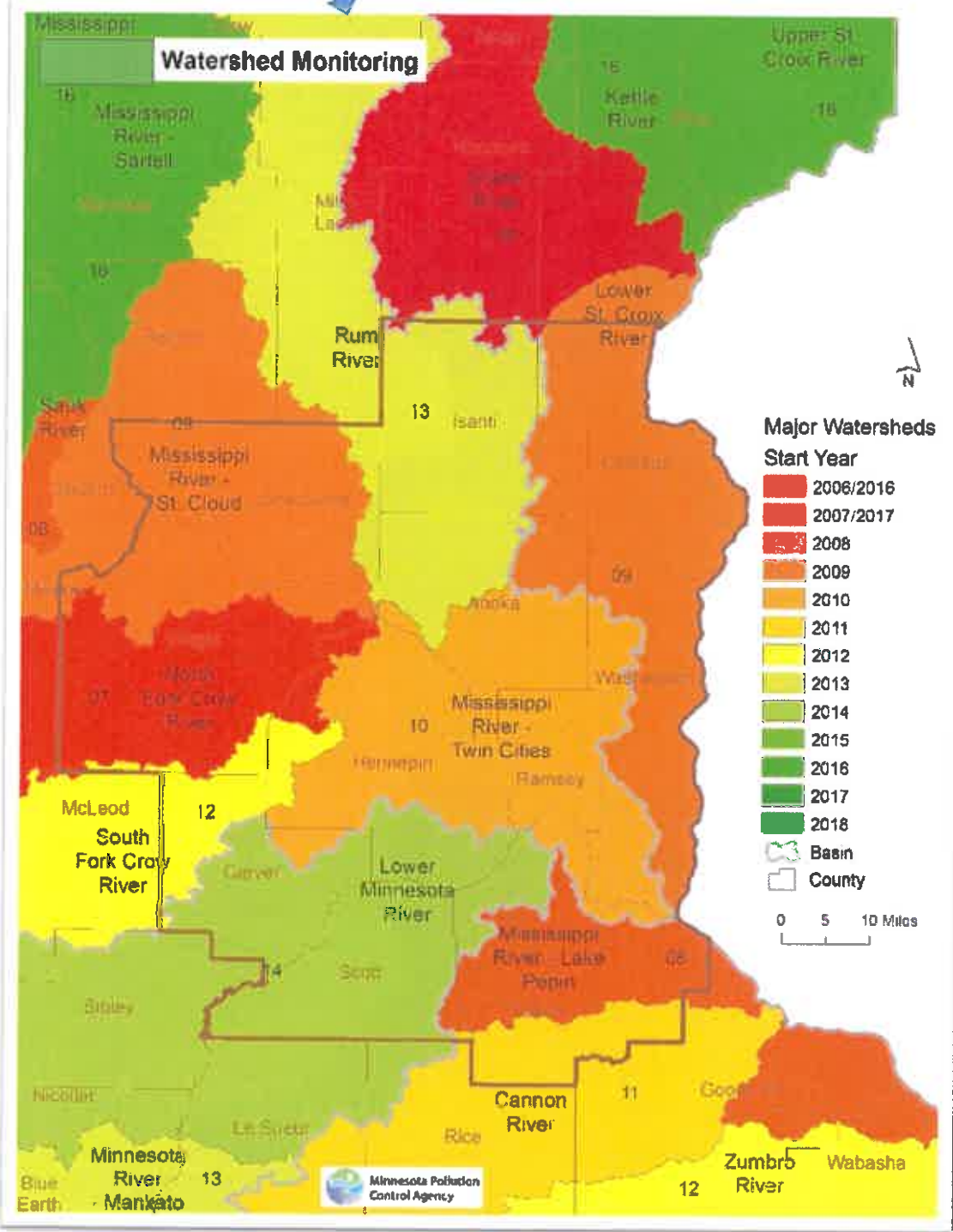


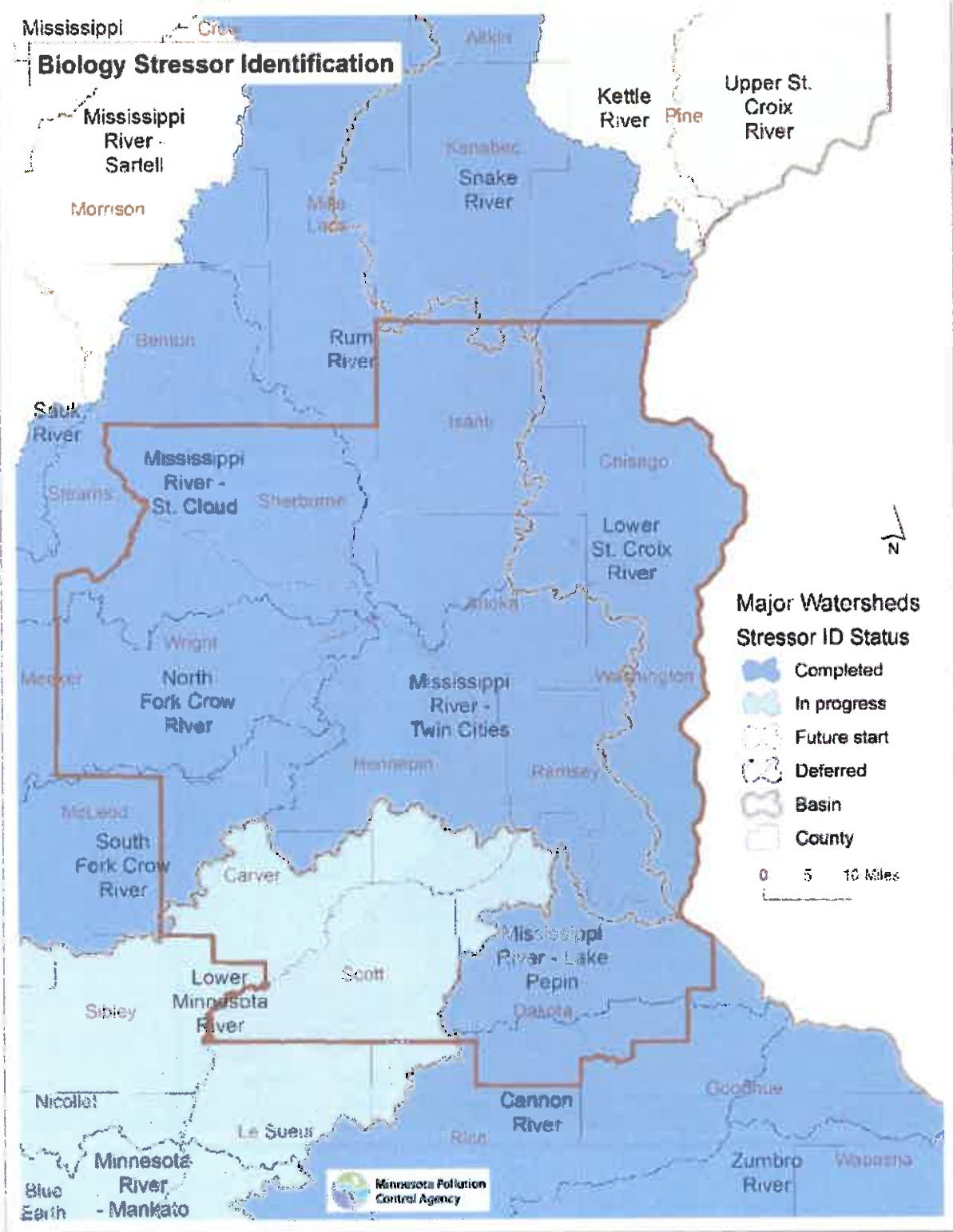


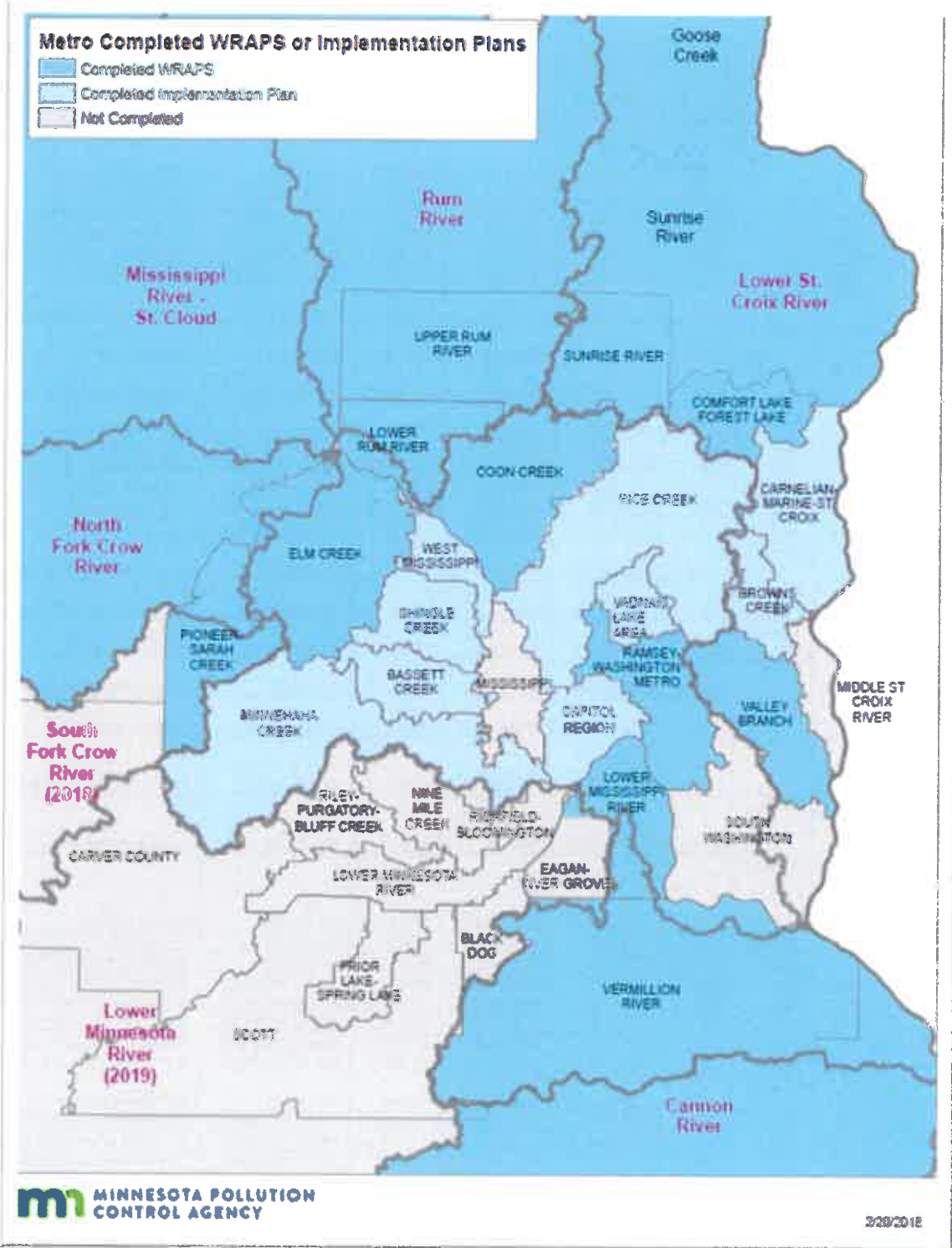
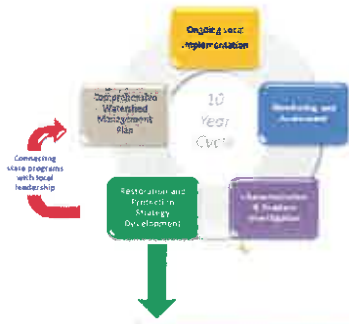
MINNESOTA POLLUTION CONTROL AGENCY
MARCH 27, 2018

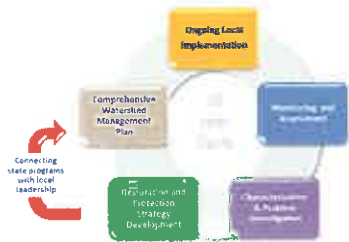




Mississippi
Biology Stressor Identification







Impaired Waters in the Mississippi River - Twin Cities HUC 8 without EPA approved TMDLs

Water body name	Water body description	Water body type	Year on List	AUID	County	WMO/WD	Affected designated use	Pollutant or stressor
Northwood	Lake or Reservoir	Lake	2004	27-0627-00	Hennepin	BCWMC	Aquatic Recreation	Nutrient/eutrophication biological indicators
Bassett Creek	Medicine Lk to Mississippi R	Stream	2004	07010206-538	Hennepin	BCWMC	Aquatic Life	Fishes bioassessments
Church	Lake or Reservoir	Lake	2018	10-0046-00	Carver	MCWD	Aquatic Recreation	Nutrient/eutrophication biological indicators
Peavey	Lake or Reservoir	Lake	2014	27-0138-00	Hennepin	MCWD	Aquatic Recreation	Nutrient/eutrophication biological indicators
Twin	Lake or Reservoir	Lake	2006	27-0656-00	Hennepin	MCWD	Aquatic Recreation	Nutrient/eutrophication biological indicators
Unnamed	Lake or Reservoir	Lake	2008	27-0053-00	Hennepin	MCWD	Aquatic Recreation	Nutrient/eutrophication biological indicators
Windsor	Lake or Reservoir	Lake	2008	27-0082-00	Hennepin	MCWD	Aquatic Recreation	Nutrient/eutrophication biological indicators
Minnehaha Creek	Lk Minnetonka to Mississippi R	Stream	2014	07010206-539	Hennepin	MCWD	Aquatic Life	Aquatic macroinvertebrate bioassessments
Minnehaha Creek	Lk Minnetonka to Mississippi R	Stream	2010	07010206-539	Hennepin	MCWD	Aquatic Life	Dissolved oxygen
Minnehaha Creek	Lk Minnetonka to Mississippi R	Stream	2004	07010206-539	Hennepin	MCWD	Aquatic Life	Fishes bioassessments
Six Mile Creek	Mud Lk to Lk Minnetonka	Stream	2016	07010206-551	Hennepin	MCWD	Aquatic Life	Nutrient/eutrophication biological indicators
Sandy	Lake or Reservoir	Lake	2002	02-0080-00	Anoka	MWMO	Aquatic Recreation	Nutrient/eutrophication biological indicators
Unnamed	Lake or Reservoir	Lake	2004	02-0079-00	Anoka	MWMO	Aquatic Recreation	Nutrient/eutrophication biological indicators
Fish	Lake or Reservoir	Lake	2006	82-0137-00	Washington	RCWD	Aquatic Recreation	Nutrient/eutrophication biological indicators
Priebe	Lake or Reservoir	Lake	2014	62-0036-00	Ramsey	RCWD	Aquatic Recreation	Nutrient/eutrophication biological indicators
White Rock	Lake or Reservoir	Lake	2010	82-0072-00	Washington	RCWD	Aquatic Recreation	Nutrient/eutrophication biological indicators
Clearwater Creek	Bald Eagle Lk to Peltier Lk	Stream	2006	07010206-519	Anoka	RCWD	Aquatic Life	Aquatic macroinvertebrate bioassessments
Clearwater Creek	Bald Eagle Lk to Peltier Lk	Stream	2002	07010206-519	Anoka	RCWD	Aquatic Life	Fishes bioassessments
Hardwood Creek	Headwaters to Hwy 61	Stream	2004	07010206-595	Washington	RCWD	Aquatic Life	Dissolved oxygen
Rice Creek	Long Lk to Locke Lk	Stream	2006	07010206-584	Anoka	RCWD	Aquatic Life	Aquatic macroinvertebrate bioassessments
Rice Creek	Long Lk to Locke Lk	Stream	2014	07010206-584	Anoka	RCWD	Aquatic Life	Fishes bioassessments
Rice Creek	Unnamed lk (02-0041-00) to Long Lk	Stream	2006	07010206-583	Ramsey	RCWD	Aquatic Life	Aquatic macroinvertebrate bioassessments
Rice Creek	Unnamed lk (02-0041-00) to Long Lk	Stream	2004	07010206-583	Ramsey	RCWD	Aquatic Life	Fishes bioassessments
Unnamed ditch (Ramsey/Washington Judicial Ditch 1)	Headwaters to Bald Eagle Lk	Stream	2004	07010206-565	Washington	RCWD	Aquatic Life	Dissolved oxygen
Jones	Wetland	Wetland	2008	62-0076-00	Ramsey	RCWD	Aquatic Life	Aquatic macroinvertebrate bioassessments
Jones	Wetland	Wetland	2008	62-0076-00	Ramsey	RCWD	Aquatic Life	Aquatic plant bioassessments
Colby	Lake or Reservoir	Lake	2006	82-0094-00	Washington	SWWD	Aquatic Recreation	Nutrient/eutrophication biological indicators
La	Lake or Reservoir	Lake	2014	82-0097-00	Washington	SWWD	Aquatic Recreation	Nutrient/eutrophication biological indicators
Markgrafs	Lake or Reservoir	Lake	2006	82-0089-00	Washington	SWWD	Aquatic Recreation	Nutrient/eutrophication biological indicators
Unnamed	Lake or Reservoir	Lake	2006	82-0087-00	Washington	SWWD	Aquatic Recreation	Nutrient/eutrophication biological indicators
Wilmes	Lake or Reservoir	Lake	2006	82-0090-00	Washington	SWWD	Aquatic Recreation	Nutrient/eutrophication biological indicators
Unnamed creek	Headwaters to Mississippi R	Stream	2002	07010206-517	Washington	SWWD	Aquatic Life	Fishes bioassessments
Pleasant	Lake or Reservoir	Lake	2014	62-0046-00	Ramsey	VLAWMO	Aquatic Recreation	Nutrient/eutrophication biological indicators
Unnamed	Lake or Reservoir	Lake	2014	62-0022-00	Ramsey	VLAWMO	Aquatic Recreation	Nutrient/eutrophication biological indicators
West Vadnais	Lake or Reservoir	Lake	2014	62-0038-02	Ramsey	VLAWMO	Aquatic Recreation	Nutrient/eutrophication biological indicators